

DATE	REV	DESCRIPTION	CHANGER
2017.04.10	A	INITIAL RELEASE.	SKUMAR06
2017.05.09	B	Document type change from RSD to SD	SKUMAR06
2017.06.15	C	Connector description changed	SRAVINDRAN

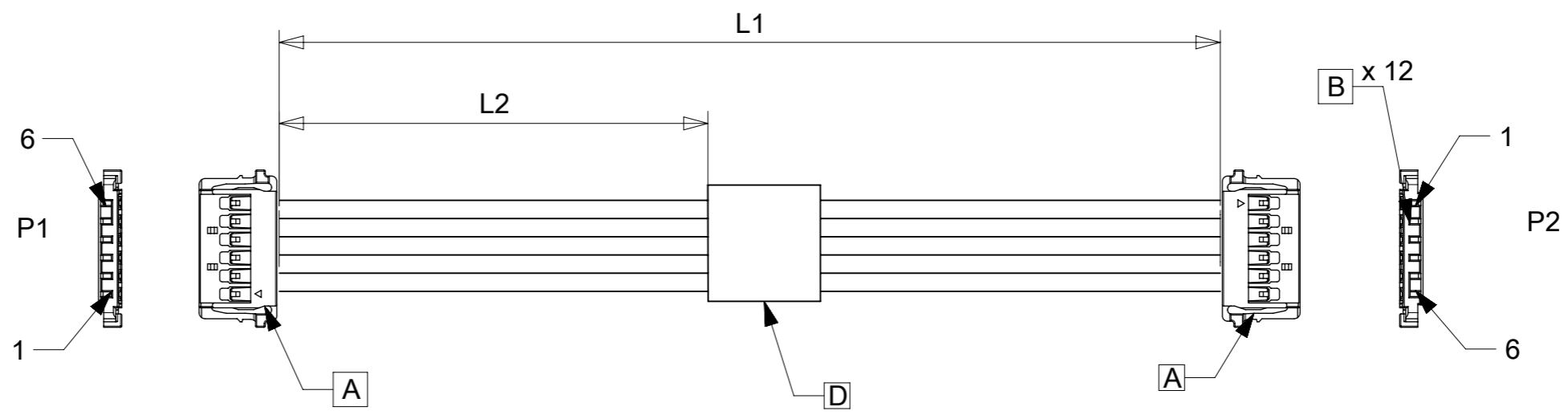


TABLE			
PART NUMBER	L1	L2	TITLE
151320600	50±5	18REF	Cable-Assy Picolock 6 Circuit 50MM
151320601	100±8	44REF	Cable-Assy Picolock 6 Circuit 100MM
151320602	150±10	69REF	Cable-Assy Picolock 6 Circuit 150MM
151320603	300±10	144REF	Cable-Assy Picolock 6 Circuit 300MM
151320605	450±15	219REF	Cable-Assy Picolock 6 Circuit 450MM
151320606	600±15	294REF	Cable-Assy Picolock 6 Circuit 600MM

P/N:15132XXXX MOLEX PN
MOLEX
Batch WK/YR

DETAIL A

NOTES

1. This product must meet 2011/65/EC ROHS compliance.
2. Cable assembly to be tested 100% for continuity and polarity.
3. Label text must be 2mm max. In height with Arial font.
4. Connector view shown is from mating side.

ITEM	DESCRIPTION	L(MM)	QTY
D	Blank White label 12.7x25.4 mm		1
C	1X24AWG DISC PVC BK 1.10MM UL1061 HOOKUP	A/R	
B	1.5 W/B REC TERMINAL AWG#24-28		12
A	1.5 W/B REC HOUSING (6P)		2

WIRING CHART		
P1	P2	COLOR
1	6	BLACK
2	5	
3	4	
4	3	
5	2	
6	1	

THIS DRAWING CONTAINS INFORMATION THAT IS PROPRIETARY TO MOLEX ELECTRONIC TECHNOLOGIES, LLC AND SHOULD NOT BE USED WITHOUT WRITTEN PERMISSION												
QUALITY SYMBOLS	2017/06/15	2017/06/15	GENERAL TOLERANCES (UNLESS SPECIFIED)		DIMENSION UNITS	SCALE						
			ANGULAR TOL ± °		MM	NTS						
▽A = 0	EC NO: 118179 DRWN: SRAVINDRAN CHK'D: MNRAYAN01 APPR: MNRAYAN01	2017/06/15	4 PLACES ±	°	DRWN BY	DATE	CABLE-ASSY PICOLOCK 6 CIRCUIT					
▽E = 0			3 PLACES ±		SKUMAR06	2017/04/25						
▽F = 0			2 PLACES ±		CHK'D BY	DATE	PRODUCT CUSTOMER DRAWING					
▽G = 0			1 PLACE ±		MNRAYAN01	2017/05/02						
▽H = 0			0 PLACES ±		APPR BY	DATE	SERIES	MATERIAL NUMBER	CUSTOMER			
▽I = 0			DRAFT WHERE APPLICABLE MUST REMAIN WITHIN DIMENSIONS		DRAWING SIZE	THIRD ANGLE PROJECTION	15132	SEE TABLE	GENERAL MARKET			
▽J = 0	C	REV	A3		DOCUMENT NUMBER		DOC TYPE	DOC PART	SHEET NUMBER			
					151320600		PSD	000	1 OF 1			